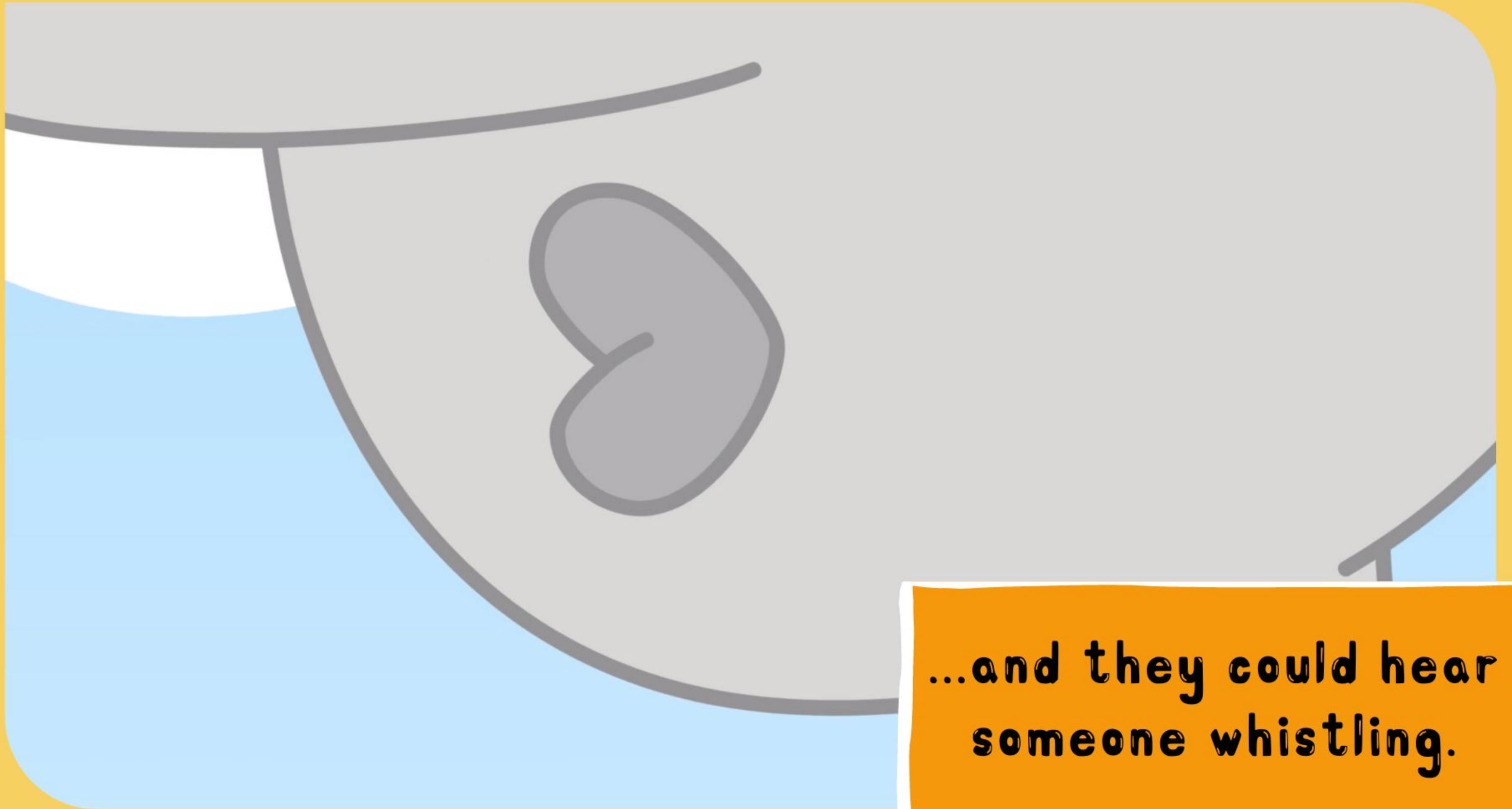


**Where are  
we, Namia?**

**Nuzo and Namia  
were in a new land...**



**...and they could hear  
someone whistling.**





**That  
sounds  
like...**

**They had heard  
of him before**





**Oh, hello kids!**

**His name is  
Bubelang**





**Hello, Bubelang!**

**Nuzo and Namia say  
hello to Bubelang.**





**Bubelang trips  
on a stick...**




...and lands in a pit.





**There is a  
piece of paper.**



A hand with a blue wristband is holding the left side of a white card. The card has a dashed border and a large 'X' drawn across it with dashed lines. The background is a green field with a yellow sky.

**The way out is near  
you.**

**Look for something big,  
green and soft.**

**Behind it is something  
round, hard and red.**

**Give it a push and you'll  
be set.**

An orange rectangular box with a white border, containing the text 'It is a clue!' in a bold, black, typewriter-style font.

**It is a clue!**



**There it is!**

**Nuzo and Namia  
spot a big  
green leaf!**





**It's  
too  
high**

**Nuzo can  
not reach the leaf!**



**Bubelang believes  
in Nuzo...**

**You  
can do  
it!**





**...but Nuzo doesn't believe in himself.**


**I don't think I can**



**I know  
you  
can**

**Namia believes  
in Nuzo.**





**I think  
I can**

**Nuzo believes  
in himself.**



**I did  
it!**

**Nuzo pushes the  
button behind  
the leaf.**





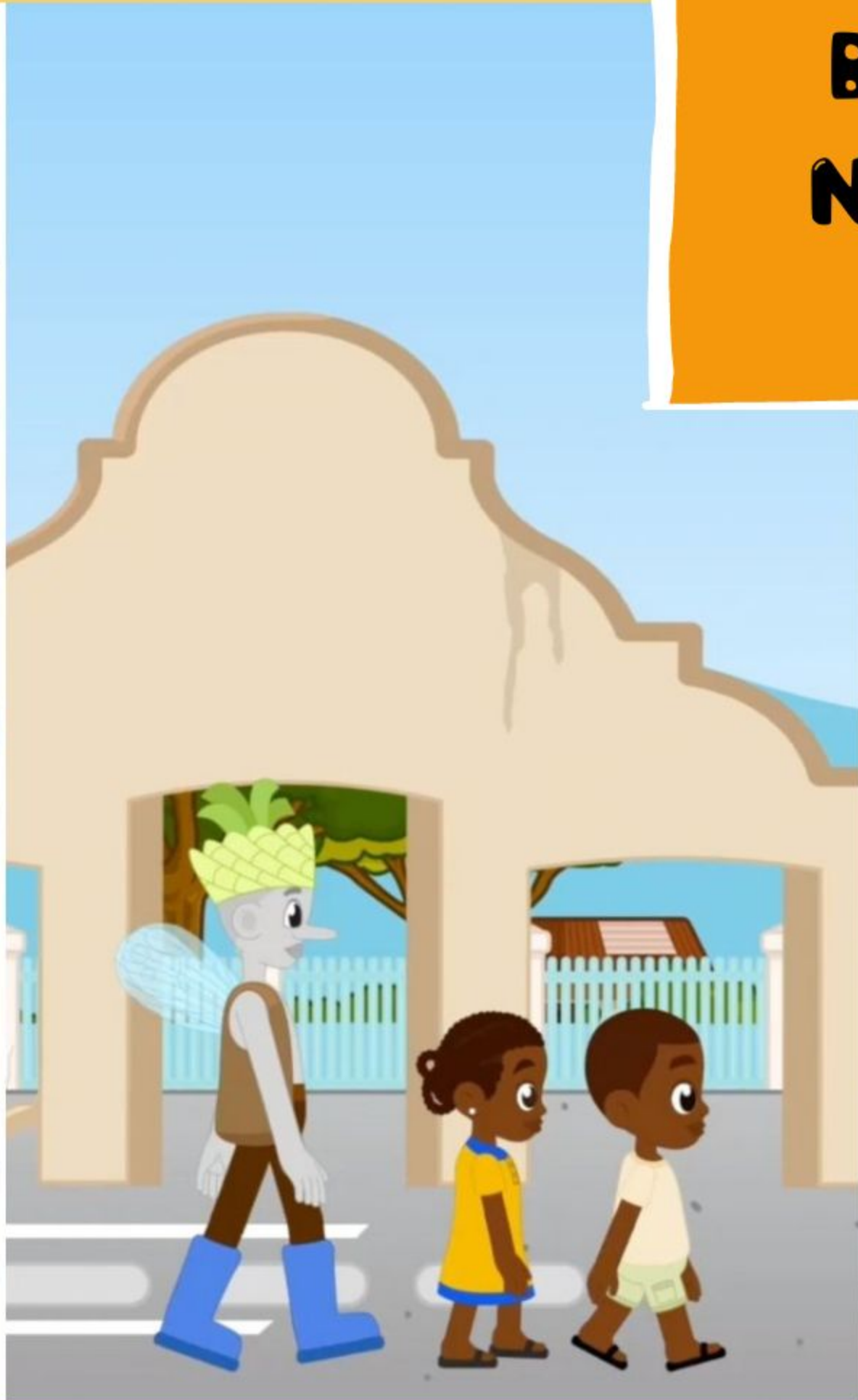
**Finally,  
I'm  
free!**

**Bubelang is freed  
from the pit!**





**Bubelang takes  
Nuzo and Namia  
to his friends.**





**He teaches Nuzo and Namia the Eswatini greetings.**







**Sanibonani**

**Hello,  
friends!**

**Nuzo and Namia say  
hello to their  
new friends.**





**Sanibonani**

**Hello, Nuzo  
and Namia!**

**Nomsa, Malusi and  
their parents say hello  
to Nuzo and Namia**





**The children play together.**





**And they eat  
together.**





**Kindness  
is my  
superpower**

**Nuzo and Namia  
carry away  
the dishes.**



e - swa -  
ti - ni

Namia reads the  
word on the ground.

ESWATINI





An illustration of a woman with dark skin and curly hair, wearing a yellow dress with a blue collar and a white bag, carrying a young child with dark skin and a large afro hairstyle. They are floating through a tunnel of pink and orange light rays. In the background, a faint image of a woman's face is visible. The scene is set against a yellow background.

**A magical wind takes  
Nu zo and Namia home.**

**The magic wind  
is carrying us!**